



CONCRETE CONSOLIDATION

VIBRATORS FOR CONCRETE COMPACTION







Intro

| | |
|---------------------------|---|
| Company profile | 4 |
| The vibration of concrete | 5 |

Internal vibrators

| | |
|--|----|
| VH - Electric vibrators | 6 |
| CM - Frequency and voltage converters | 8 |
| EWO - Electric vibrators with built-in converter | 10 |
| VHPG - Electric vibrator with pistol grip | 12 |
| VHA - Pneumatic vibrators | 14 |

External vibrators

| | |
|-----------------------------------|----|
| Electric vibrators | 16 |
| Foot mounted | 17 |
| Foot mounted + built-in converter | 18 |
| Cradle mounted | 19 |
| Pneumatic vibrators | 20 |
| Fastening systems | 22 |
| Multiple sockets panel | 23 |

Systems design

| | |
|---------------------------|----|
| OLI's experts consultancy | 24 |
| Electric system | 25 |
| Pneumatic system | 25 |

Extra

| | |
|----------------------------------|------------|
| Tips and recommendations for use | extra page |
| Technical drawings | extra page |






Worldwide leader in vibration technology

OLI is the world's top selling manufacturer of Electric and Pneumatic Vibrators.

A high level of customer service is guaranteed through 20 OLI Trading Subsidiaries, 70+ local warehouses and 4 manufacturing plants worldwide.

OUR 3 DIVISIONS

PROVIDE CUSTOMERS WITH OPTIMAL SOLUTIONS FOR ALL REQUIREMENTS

| INDUSTRIAL VIBRATORS | FLOW AIDS | CONCRETE CONSOLIDATION |
|--|---|--|
|  <p>Electric motovibrators for vibrating equipment.</p> |  <p>Comprehensive range of electric and pneumatic vibrators to solve any problem of flowability.</p> |  <p>Internal and external vibrators, converters and accessories for reliable and efficient concrete compaction.</p> |

Originally specialising in immersion vibrators for concrete consolidation, OLI is now the worldwide leader in vibration technology, with a **complete range of electric and pneumatic internal and external vibrators**.

By supplying **competitive, high quality products for wide-ranging applications**, OLI combines **performance** and **reliability** by adapting to the ever-changing market. A strong believer in innovation, OLI is constantly striving to be ahead of the opposition.

As a global player in industrial vibration technology, the key focus of OLI's business strategy is **rapid stock delivery, any time, anywhere in the world**.

Excellent customer service is of pivotal importance: the company guarantees **quick order processing** and customers worldwide can enjoy access to the same high quality product and services.

OLI has access to credible expertise when it comes to finding suitable solutions to customers' requests. A team of engineers specialised in designing efficient, reliable, and safe solutions backed by **globally certified management**.

OLI provides their customers with state-of-the-art equipment and the blueprint for the next generation of products is already in progress.



The vibration of concrete

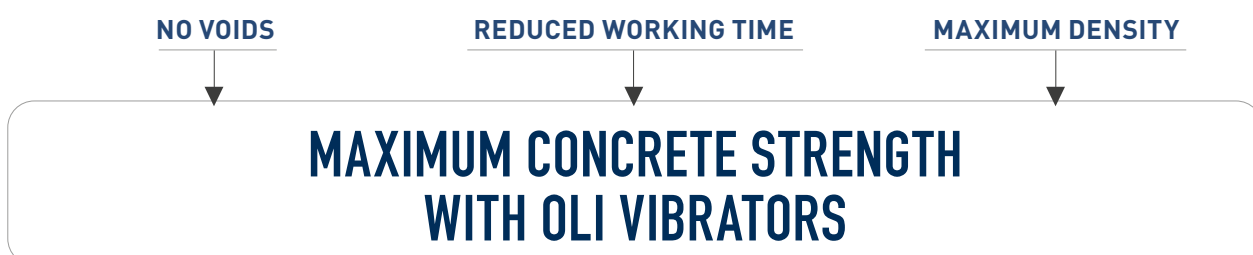
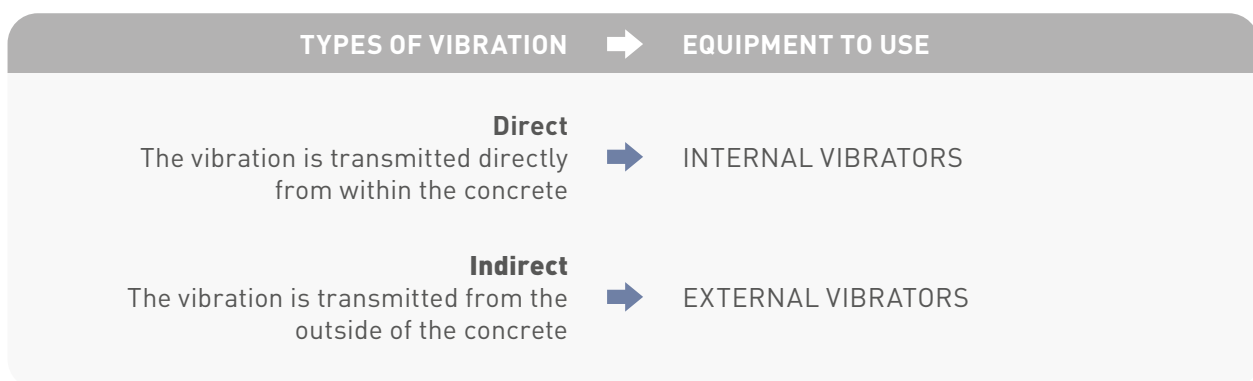
The freshly mixed concrete does not compact by itself because the poor fluidity is not able to overcome the internal friction; only by using the vibration it's possible to overcome such resistance and get the concrete compacted.

THE VIBRATION CONTRIBUTES TO:

- The **surfacing of the air** trapped in the concrete;
- The **displacement of aggregates**, aligning them with one each other, with consequent reduction of cavities, conferring them high density and perfect homogeneity;
- The **adhesion** of the concrete to the bars of the reinforcement armatures or to any internal structural inserts, as well as to the basic anchorages.

BENEFITS:

- High **mechanical resistance**.
- Low porosity and thus **low permeability** to water and to aggressive substances contained therein.
- **Absence of cracks** within the concrete in the proximity of the reinforcement armatures' bars.
- **Complete filling** of the formwork.
- **Increase in the life cycle** of the concrete.
- High **aesthetic result**.





INTERNAL ELECTRIC VIBRATORS

Flexible and easy-to-use vibrating systems are required whenever there is the construction of industrial floors, walls, columns, slabs, etc. In such cases high-frequency immersion vibrators are generally used, known as “poker” or simply “vibrating needles”. They come into **direct contact with the concrete**; for this reason, we speak of internal direct vibration.

HOW THE VH VIBRATORS WORK

An eccentric mass is housed inside the vibrating head (or needle) which is fixed to a rotating shaft powered by a three-phase asynchronous AC motor. During rotation, the eccentricity of the mass generates rotational movements to the vibrating head.

The **robustness** and the **constant rotation speed** are essential factors in the compaction of the concrete: drop in the speed and centrifugal force heavily reduce the quality of the manufactured article.

The VH is a robust and reliable product, which is suitable for compacting the concrete and it is appropriate for continuous operation.

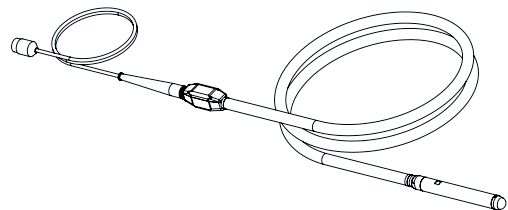
Important:

The VH has to be operated by electric or electronic converters that convert the 50/60 Hz main frequencies to 200 Hz. This is necessary for the vibrating head in order to reach a vibration speed of 12,000 vpm, as it is ideal for the proper compaction.



Benefits

- » No overheating
- » Easy maintenance
- » Long life of the vibrator head
- » 100% Water Proof



MAXIMUM DURABILITY
HIGH PERFORMANCE



VH

Internal electric high frequency vibrators



VHN
VHP-R



VHP

| Model | CF | Rated current * | Rated power (42V) | Action diameter * | Amplitude | Noise level | Compaction power * | DIMENSIONAL SPECIFICATIONS | | | |
|-------------|-------|-----------------|-------------------|-------------------|-----------|-------------|--------------------|----------------------------|-------------|-------------|--------------|
| | | | | | | | | Head Diameter | Head Length | Head Weight | Total Weight |
| | | | | | | | | mm | mm | kg | kg |
| VHN 38 | 1,700 | 8 | 0.5 | 45 | 1.8 | 70 | 20 | 38 | 404 | 2.4 | 10.6 |
| VHN 50 | 3,080 | 11 | 0.6 | 60 | 2.0 | 76 | 25 | 50 | 403 | 4.4 | 14.8 |
| VHN 59 | 4,560 | 12 | 0.9 | 80 | 2.3 | 76 | 35 | 59 | 420 | 6.8 | 17.4 |
| VHP 50 | 3,760 | 15 | 0.9 | 70 | 2.1 | 76 | 40 | 50 | 468 | 5.4 | 16.4 |
| VHP 59 | 5,640 | 17 | 1.1 | 90 | 2.4 | 79 | 45 | 59 | 498 | 8.2 | 19.6 |
| VHP 65 | 7,330 | 24 | 1.3 | 110 | 2.6 | 79 | 50 | 65 | 484 | 9.4 | 22.4 |
| VHP-R 59 ** | 4,800 | 12 | 1.0 | 90 | 2.3 | 78 | 45 | 59 | 430 | 6.0 | 16.5 |
| VHP-R 65 ** | 6,500 | 14 | 1.1 | 100 | 2.4 | 78 | 50 | 65 | 440 | 8.0 | 19.5 |

* Measurements vary according to the quality and thickness of the concrete ** Equipped with roller bearings

INTERNAL VIBRATORS


EXTERNAL VIBRATORS

COMPLETE PLANTS

VH - INTERNAL ELECTRIC HIGH FREQUENCY VIBRATORS

| | |
|-------------|---|
| APPLICATION | Concrete compaction |
| DESCRIPTION | Internal high frequency electric vibrators for concrete consolidation characterised by high performance, consistent speeds, and remarkable resistance to abrasion |

FEATURES

| | |
|---------------------|--|
| DUTY CYCLE | Continuous S1 |
| INPUT | 42V - 3ph - 200Hz |
| NOMINAL FREQUENCY | 12,000 vpm |
| INSULATION CLASS | F (T° max = 155 °C) |
| THERMAL SWITCHES | Inside the stator. Max T °C = 150 °C |
| WORKING TEMPERATURE | From -20 °C to +40 °C |
| HEAD | Ball bearing: n.2 VHN 50 / VHN 59 - n.4 VHN 38 and complete VHP range Roller bearing: VHP-R 59 / VHP-R65 Protection class IP68 Hardening treatment for VHN / VHP-R and chrome plating for VHP |
| SWITCH BOX | Polyamide (nylon +30% fiber glass) with gasket, cable protection, yellow colour IP66 protection Designed for continuous use and resistant to wear and tear |
| OPERATING HOSE | 5 m SBR rubber hose with inner textile reinforcement |
| SUPPLY CABLE | 10 m neoprene electric cable HO7RN-F with 3 pin plug (42V - 3 phase, IP44) |
| FINISHING | VIBRATING HEAD: painted yellow Ral 1007 (VHN / VHP-R), chromate (VHP) SWITCH BOX: colour yellow Ral 1007 |
| CERTIFICATIONS |  Community Directives and subsequent modifications: 2006/42/EC - 2006/95/EC Conformity verified according to the standard documents: IEC60745-1, IEC 60745-2-12, IEC 60034-1 |
| OPTIONS | Rubber cap |



Rubber cap



FREQUENCY AND VOLTAGE CONVERTERS

The internal vibrating needles need to be powered via a three-phase electric line at low voltage and high frequency, therefore it is necessary to use a voltage and frequency converter.

The electromechanical rotary converters consist of a motor and a generator, which are coupled together. The motor converts the electrical energy into mechanical energy; the generator converts the mechanical energy into electrical energy, thus generating the required voltage and frequency (42 Volt - 200 Hz).

The converters of the CM range are designed to supply simultaneously and in a continuous cycle one or more high-frequency internal vibrators; they are reliable, durable and do not require maintenance.

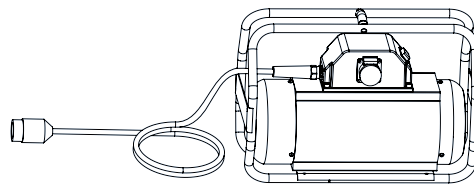
The minimal design and the materials used **facilitate the external cleaning**, while the special internal air ducting system **avoids overheating**.

The range comprises several models, which are **capable of supplying from 1 to 4 immersion vibrators**.



Benefits

- » No overheating
- » No maintenance
- » Optimal cooling
- » Easy cleaning



LONG LIFE
OPTIMUM COOLING



CM

Frequency and voltage converters



CMM 11



CMM 15



CMM 25, CMT 25



CMT 35



CMT 55, CMT 85


| Model | Frame | Outlets | Supply Electric Cable | Weight | INPUT | | | OUTPUT | | |
|--------|---------|---------|-----------------------|---------------------|-----------------------------|---------|-------|------------------------------|---------|-------|
| | | | | | Input Voltage and Frequency | Current | Power | Output Voltage and Frequency | Current | Power |
| | | | | | V / f | A | kW | V / f | A | kVA |
| CMM 11 | Handle | 1 | 3.5 | 17 | 230V, 1ph, 50Hz | 2.5 | 0.5 | 42V ± 10% 3ph 200Hz | 11 | 0.8 |
| CMM 15 | Handle | 1 | 25 | 6 | | 1.1 | 14 | | 1.0 | |
| CMM 25 | Frame | 2 | 34 | 10 | | 1.8 | 25 | | 1.8 | |
| CMT 25 | Frame | 2 | 33 | 5 | | 2.8 | 25 | | 1.8 | |
| CMT 35 | Wheeled | 3 | 41 | 400V 3ph 50Hz | 6 | 3.3 | 36 | | 2.6 | |
| CMT 55 | Wheeled | 3 | 50 | | 9 | 5.0 | 55 | | 4.0 | |
| CMT 85 | Wheeled | 4 | 56 | | 12 | 6.6 | 85 | | 6.2 | |

| COMPATIBILITY TABLE | | | | | | |
|---|-----------|-----------|-----------|-----------|-----------|-----------|
| Maximum number of vibrators that can be connected | | | | | | |
| CMM 11 | 1x VHN 38 | 1x VHN 50 | - | - | - | - |
| CMM 15 | 1x VHN 38 | 1x VHN 50 | 1x VHN 59 | - | - | - |
| CMM 25 | 2x VHN 38 | 2x VHN 50 | 2x VHN 59 | 1x VHP 50 | 1x VHP 59 | 1x VHP 65 |
| CMT 25 | 2x VHN 38 | 2x VHN 50 | 2x VHN 59 | 1x VHP 50 | 1x VHP 59 | 1x VHP 65 |
| CMT 35 | 3x VHN 38 | 3x VHN 50 | 3x VHN 59 | 2x VHP 50 | 2x VHP 59 | 1x VHP 65 |
| CMT 55 | 3x VHN 38 | 3x VHN 50 | 3x VHN 59 | 3x VHP 50 | 3x VHP 59 | 2x VHP 65 |
| CMT 85 | 4x VHN 38 | 4x VHN 50 | 4x VHN 59 | 4x VHP 50 | 4x VHP 59 | 3x VHP 65 |

CM - FREQUENCY AND VOLTAGE CONVERTERS

| | |
|-------------|---|
| APPLICATION | Concrete compaction |
| DESCRIPTION | Frequency and voltage converters equipped with permanent magnets, specifically designed to power high frequency concrete vibrators continuously |

FEATURES

| | |
|---------------------|---|
| DUTY CYCLE | Continuous S1 |
| INSULATION CLASS | F (T° Max = 155 °C) |
| PROTECTION | Overload protection |
| WORKING TEMPERATURE | From -20 °C to +40 °C |
| CONNECTION BOX | Polyamide (nylon + 30% fibre glass), complete with switch and sockets (42V three phase, IP44 protection) |
| SUPPLY CABLE | Neoprene electric cable H07RN-F with plug |
| FINISHING | Powder coating (body yellow Ral 1007; fan covers, wheels and frame black Ral 9007) |
| CERTIFICATIONS |  Community Directives and subsequent modifications: 2006/42/EC - 2006/95/EC Conformity verified according to the standard documents: EN 12100-1, EN 12100-2, CEI EN 60745-1 |
| DESIGN | Smooth and robust cast aluminium body Forced ventilation |



INTERNAL VIBRATORS WITH BUILT-IN CONVERTER

On construction sites, during the consolidation of the concrete, a light, flexible and easy-to-use tool is often required, which **can be connected directly to the common single-phase power lines** (230 or 110 Volt, 50/60 Hz).

The solution to fulfil this need is the **EWO** range: **high-frequency immersion vibrators equipped with an integrated electronic frequency converter** capable of transforming the single-phase input voltage (230V or 110V, 50/60 Hz) into the three-phase voltage (230 V, 200 Hz) necessary to obtain 12,000 vpm.

Compared to the common vibrating needles

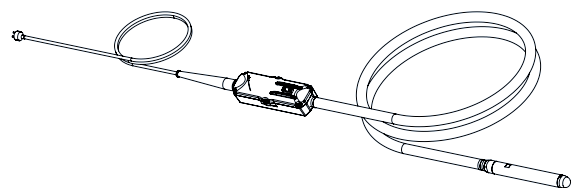
powered by electromechanical converters, the EWO vibrators have several advantages:

- they are **light and flexible**;
- the constant output frequency maintains the maximum centrifugal force and thus a **high and consistent performance**;
- there is a **protection** against short circuits, excessive temperature, overvoltage and overcurrent above or below the nominal values.



Benefits

- » Reliable
- » Safe & easy to handle
- » No overheating
- » Easy maintenance



COMPACT SOLUTION



Internal high frequency vibrators with built-in converter



EWO 50C
EWO 59C
EWO 65C



EWO 38C

| Model | CF | Rated Current* | Rated power [230V] | Action Diameter ** | Amplitude | Noise Level *** | Compaction Power ** | DIMENSIONAL SPECIFICATIONS | | | |
|---------|-------|----------------|--------------------|--------------------|-----------|-----------------|---------------------|----------------------------|-------------|-------------|------------------|
| | | | | | | | | Head Diameter | Head Length | Head Weight | Total Weight**** |
| | | | | | | | | mm | mm | kg | kg |
| EWO 38C | 1,700 | 1.5 | 0.5 | 45 | 1.8 | 70 | 20 | 38 | 404 | 2.4 | 14.5 |
| EWO 50C | 3,760 | 2.7 | 0.9 | 70 | 2.1 | 76 | 40 | 50 | 468 | 5.2 | 20.0 |
| EWO 59C | 5,640 | 3.0 | 1.1 | 90 | 2.4 | 79 | 45 | 59 | 499 | 8.2 | 22.8 |
| EWO 65C | 7,330 | 4.5 | 1.3 | 110 | 2.6 | 79 | 50 | 65 | 484 | 9.4 | 24.8 |

* Refer to centrifugal force for amperage assessment

** Measurements vary according to concrete quality and thickness

*** Measured at 1 m distance

**** Packaging included.

| Model | Input Voltage | Input Frequency | Input Amperage |
|---------------|--------------------|-----------------|----------------|
| Converter 230 | 230V +10% -15% 1ph | 50/60Hz ± 5% | 5.5 A |
| Converter 115 | 115V +10% -15% 1ph | 50/60Hz ± 5% | 11.0 A |

EWO - INTERNAL HIGH FREQUENCY VIBRATORS WITH BUILT-IN CONVERTER

APPLICATION Concrete compaction

DESCRIPTION Equipped with compact electronic frequency converters integrated into the supply cable, characterised by high centrifugal forces, constant speeds and high wear resistance

FEATURES

DUTY CYCLE Continuous S1

INPUT 230V or 115V ± 10% 50/60 Hz -1 ph

NOMINAL FREQUENCY 12.000 vpm

INSULATION CLASS F (T° max = 155 °C)

PROTECTION CLASS Head protection IP68
Converter protection IP66
The inverter is protected against overcurrent, overvoltage, excess temperature and short circuit.
A LED light shows the presence of a fault

WORKING TEMPERATURE From -20 °C to +40 °C

HEAD Equipped with 4 ball bearings greased for life
Hardening treatment (EWO 38C), chrome plating (EWO 50C, EWO 59C, EWO 65C)

SWITCH BUILT-IN Complete with reinforced gasket


PROTECTION HOSE 5 m SBR rubber hose with textile reinforcement

SUPPLY CABLE 10 m neoprene electric cable HO7RN-F with SCHUKO 220V 2P+1T 16A plug

CONVERTER Sturdy cast aluminium box
Ergonomic and lightweight (3 Kg)

INVERTER Tropicalised and protected against vibration, moisture and shocks with a special resin

FINISHING Painted yellow RAL 1007 (EWO 38C) and chrome plating (EWO 50C - EWO 59C - EWO 65C)

CERTIFICATIONS  Community Directives and subsequent modifications: 2006/42/EC, 2014/30/EU, 2014/35/EU
Conformity verified according to the standard documents: CEI EN 60745-1, CEI EN 60745-2-12

OPTIONS Rubber cap



INTERNAL VIBRATORS WITH PISTOL GRIP

For Thin layers of concrete, such as floors or slabs, a short, light and manoeuvrable vibrator is needed. For all these cases, the ideal solution is to use a pistol grip poker.

Through a switch located in the pistol, the operator is able to activate and deactivate the vibrator as needed and move easily on the construction site.

The highest level of safety is ensured through a low voltage needle (42V) as well as perfect compaction and aesthetic results are obtained thanks to the high speed (12,000 vpm).

Important:

The VHPG has to be operated by electric and electronic converters that convert the 50/60 Hz mains frequency to 200 Hz, which is necessary in order for the vibrating head to reach a vibration speed of 12,000 vpm, as it is ideal for the proper compaction.



Benefits

- » Compact solution
- » Lightweight
- » Long life of the vibrator head



EASY TO HANDLE



VHPG

Internal high frequency vibrators with pistol grip



| Model | CF | Rated current * | Rated power (42V) | Action diameter * | Amplitude | Noise level | Compaction power * | DIMENSIONAL SPECIFICATIONS | | | |
|---------|-------|-----------------|-------------------|-------------------|-----------|-------------|--------------------|----------------------------|-------------|-------------|--------------|
| | N | A | kW | cm | mm | dB A | m3/h | Head Diameter | Head Length | Head Weight | Total Weight |
| | | | | | | | | mm | mm | kg | kg |
| VHPG 38 | 1,700 | 8 | 0.5 | 45 | 1.8 | 70 | 20 | 38 | 404 | 2.4 | 7.4 |
| VHPG 50 | 3,080 | 11 | 0.6 | 60 | 2.0 | 76 | 25 | 50 | 403 | 4.4 | 9.4 |
| VHPG 59 | 4,560 | 12 | 0.9 | 80 | 2.3 | 76 | 35 | 59 | 420 | 6.8 | 11.8 |

* Measurements vary according to the quality and thickness of the concrete.

** Equipped with roller bearings

VHPG - INTERNAL ELECTRIC HIGH FREQUENCY VIBRATORS WITH PISTOL GRIP

APPLICATION Concrete compaction

DESCRIPTION High frequency internal electric vibrators for concrete consolidation characterised by high performance, consistent speeds, and remarkable resistance to abrasion.

FEATURES

DUTY CYCLE Continuous S1

INPUT 42V - 3ph - 200Hz

NOMINAL FREQUENCY 12,000 vpm

INSULATION CLASS F (T° max = 155 °C)

THERMAL SWITCHES Inside the stator. Max T °C = 150 °C

WORKING TEMPERATURE From -20 °C to +40 °C


HEAD Ball bearing: n.2 VHPG 50 / VHPG 59 - n.4 VHPG 38

PLASTIC PISTOL Grip with cable protection, green colour
IP54 protection

OPERATING HOSE 0.8 m SBR rubber hose with inner textile reinforcement

SUPPLY CABLE 10 m neoprene electric cable H07RN-F with 3 pin plug (42V - 3 phase, IP44)

FINISHING VIBRATING HEAD: painted yellow Ral 1007

CERTIFICATIONS  Community Directives and subsequent modifications: 2006/42/EC - 2006/95/EC
Conformity verified according to the standard documents: IEC60745-1, IEC 60745-2-12, IEC 60034-1

OPTIONS Rubber cap





INTERNAL PNEUMATIC VIBRATORS

VHA is a reliable vibration system designed to provide high operating frequency with high working efficiency under safe conditions. For this reason it is ideal for every type of compaction: from lab tests to heavy infrastructure projects.

There are no moving parts inside the hose, this means less vibration on the hands and arms of the operator and an extended service life.

As a pneumatic vibrator, VHA doesn't need electricity and can even work out of concrete without overheating. This means no work interruptions even in severe conditions.

Ease-of-use and maintenance-free make the VHA the perfect solution for compacting concrete when electricity is not available.



Benefits

- » High working efficiency
- » No work interruptions
- » Maintenance free
- » Safe



NO ELECTRICITY



Internal high frequency pneumatic vibrators



| Model | CF | Vibration | Working Pressure | Air Consumption | DIMENSIONAL SPECIFICATIONS | | |
|---------|--------|-----------|------------------|-----------------|----------------------------|-------------|--------------|
| | | | | | Head Diameter | Head Length | Total Weight |
| | | | | | N | vpm | bar |
| VHA 40 | 2,712 | 22,000 | 6 | 500 | 40 | 230 | 4.0 |
| VHA 50 | 5,627 | 17,000 | 6 | 800 | 50 | 250 | 5.8 |
| VHA 60 | 9,321 | 12,000 | 6 | 900 | 60 | 290 | 7.6 |
| VHA 80 | 15,829 | 11,000 | 6 | 1,300 | 80 | 330 | 14.2 |
| VHA 105 | 22,304 | 10,500 | 6 | 2,100 | 105 | 395 | 23.0 |
| VHA 150 | 32,460 | 10,000 | 6 | 2,880 | 150 | 508 | 38.0 |

VHA - HIGH FREQUENCY PNEUMATIC IMMERSION VIBRATORS

APPLICATION Concrete compaction

DESCRIPTION High frequency internal pneumatic vibrators for concrete consolidation

FEATURES

DUTY CYCLE Continuous

WORKING PRESSURE 6 Bar

AIR SUPPLY QUALITY 5.4.4

WORKING TEMPERATURE -10°C / +60°C

MAX NOISE LEVEL 99 dB (A)

TECHNOLOGY Eccentric rotor

HEAD MATERIAL Steel

FINISHING Painted yellow RAL 1007

OPERATING HOSE 2 m SBR rubber hose with inner textile reinforcement

CERTIFICATIONS



Community Directives and subsequent modifications: 2006/42/EC - 2006/95/EC

OPTIONS Different length of the hose (up to 6 m)
Quick connect fittings with filter included



EXTERNAL ELECTRIC VIBRATORS

High frequency electric vibrators are used in construction sites and in precast manufacturing plants to obtain high-quality products (exposed concrete), with **excellent aesthetic results and weather resistance**. The vibration is transmitted to the concrete **indirectly** through formworks or mould.

Just like the internal vibrators, the external ones are also based on the principle of the vibration produced by the rotation of an eccentric mass powered by a three phase electric motor.

Low speed vibration (3,000 rpm) is used on high-density and unreactive concretes mostly, as they allow a fast displacement of the aggregates. High speed vibration (6,000 or 9,000 rpm) is recommended with low-density concretes and in applications where high surface quality is required.

The possibility to adjust both the frequency and the speed (from 0 up to 9,000 rpm) guarantees the achievement of the perfect operational frequency. It depends on the type of concrete to vibrate as well as the natural resonant frequency of the mould.

The OLI external electric vibrators are characterised by **high operating efficiency** and **ease of installation**. Specially designed attachment devices (quick-coupling clamps) reduce the time required for installing and repositioning.

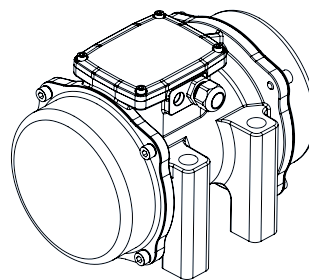
This vibration system is recommended when:

- High construction elements and narrow walls (partitions, columns, beams) have to be compacted, which are difficult to vibrate with other systems.
- The reinforcement density inside the housing is high.

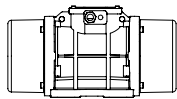


Benefits

- » Sturdy design, made to last
- » High operating efficiency
- » Easy to install



RELIABLE



FOOT MOUNTED

External high frequency vibrators



Class II Div.2: Temp. Class **T4**
ExII 3D Temp. Class: 135 °C



| Wm kgcm | Model | Weight kg | Centrifugal Force kg | rpm | ELECTRICAL SPECIFICATIONS | | | | | | |
|------------|---------------------|--------------|-------------------------|---------|---------------------------|-----------------|---------------------------|----------|-------------------|-------|-----------------------|
| | | | | | Input Power kW | Frequency Hz | Nominal Current A Max. | | | COS φ | Cable Gland Metric |
| | | | | | | | 42V | 230/400V | 220-240V/400-460V | | |
| 1.47 | MVE 290/6N-HF-10A0 | 4.6 | 297 | 0-6,000 | 0.27 | 0-200 | 5 | / | 0.92/0.53 | 0.75 | M20 |
| 6.82 | MVE 1530/6N-HF-38E0 | 12.0 | 1,384 | 0-6,000 | 1.00 | 0-200 | 15 | / | 2.80/1.62 | 0.89 | M20 |
| 7.32 | MVE 1300/6N-HF-50A0 | 21.7 | 1,474 | 0-6,000 | 1.30 | 0-100 | 23 | / | 4.22/2.44 | 0.77 | M20 |
| 7.32 | MVE 1300/6N-HF-53A0 | 36.0 | 1,474 | 0-6,000 | 1.30 | 0-100 | / | / | 4.22/2.44 | 0.77 | M20 |
| 7.32 | MVE 2000/6N-HF-53A0 | 30.0 | 2,030 | 0-6,000 | 1.30 | 0-100 | 25 | / | 4.22/2.44 | 0.77 | M20 |
| 11.85 | MVE 2400/6N-HF-53A0 | 30.6 | 2,383 | 0-6,000 | 1.60 | 0-200 | 24 | / | 4.38/2.53 | 0.91 | M20 |
| 4.70 | MVE 2000/9N-HF-53A0 | 30.0 | 2,156 | 0-9,000 | 1.50 | 0-150 | 28 | / | 5.02/2.90 | 0.75 | M20 |

NOTE: All the vibrators can be used in variable frequency if connected to the electronic control panel of OLI.

| Model | Drawing | Size | DIMENSIONAL SPECIFICATIONS (mm) | | | | | | | | | | | | |
|---------------------|---------|------|---------------------------------|----|------------|--------------|-----|-------|-----|-----|-----|----|-----|-----|-----|
| | | | C | M | A | B | Ø G | Holes | D | E | F | H | I | L | N |
| MVE 290/6N-HF-10A0 | A | 10A0 | 211 | 45 | 62-74 / 33 | 106 / 83-105 | 9-7 | 4 | 130 | 135 | 11 | 50 | 96 | 107 | 85 |
| MVE 1530/6N-HF-38E0 | B | 38E0 | 255 | 43 | 90 | 154 | 18 | 4 | 187 | 195 | 121 | 89 | 174 | 169 | 156 |
| MVE 1300/6N-HF-50A0 | C | 50A0 | 321 | 62 | 120 | 170 | 17 | 4 | 208 | 210 | 22 | 96 | 185 | 192 | 170 |
| MVE 1300/6N-HF-53A0 | C | 53A0 | 391 | 97 | 100 | 180 | 17 | 4 | 235 | 210 | 24 | 96 | 185 | 187 | 169 |
| MVE 2000/6N-HF-53A0 | C | 53A0 | 391 | 62 | 100 | 180 | 17 | 4 | 235 | 210 | 24 | 96 | 185 | 187 | 169 |
| MVE 2400/6N-HF-53A0 | C | 53A0 | 391 | 97 | 100 | 180 | 17 | 4 | 235 | 210 | 24 | 96 | 185 | 187 | 169 |
| MVE 2000/9N-HF-53A0 | C | 53A0 | 391 | 97 | 100 | 180 | 17 | 4 | 235 | 210 | 24 | 96 | 185 | 187 | 169 |

FOOT MOUNTED ELECTRIC VIBRATORS

APPLICATION Concrete compaction

DESCRIPTION High frequency electric vibrator, foot mounted, external application

FEATURES

DUTY CYCLE Continuous S1

MULTIVOLTAGE 3ph 42V - 3ph 230/400V [* voltage tolerance ± 10%]

FREQUENCY 0-100Hz - 0-150Hz - 0-200Hz

WORKING TEMPERATURE -10 °C / +40 °C

MAX NOISE LEVEL 85 dB(A) at 1 meter distance

MATERIAL Cast aluminium or iron

FINISHING Painted: orange RAL 2009

CERTIFICATIONS



II3D Ex tc IIIC Tx IP66
Equipment and protective system intended for use in potentially explosive atmospheres (Zone 22) - Directive 2014/34/UE
Compliance with Essential Health and Safety Requirements
EN 60079-0, EN 60079-31



Declaration of conformity "type B" according to: 2014/35/UE - 2006/42/EC - EN 60034-1



Conform to UL1446 and CSA 22.2 No 0-10

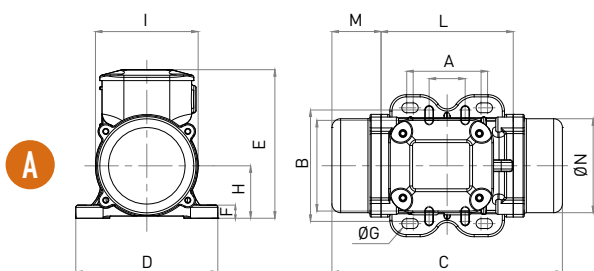
OPTIONS Power cable and plug terminal box fulfil of resin

ACCESSORIES Fixing brackets: CLW (Clamp for Wooden formworks); CLS (Clamp for Steel formworks) only for MVE 290/6N-HF-10A0



FOOT MOUNTED ELECTRIC VIBRATORS + BUILT-IN CONVERTER

External high frequency vibrators



Class II Div.2: Temp. Class T4
ExII 3D Temp. Class: 100 °C



| Wm kgcm | Model | Weight kg | Centrifugal Force kg | rpm | ELECTRICAL SPECIFICATIONS | | | | | | |
|------------|--------------------|--------------|----------------------------|-------|---------------------------|-----------------|---------------------------|------------------|-------|---------|--------------------------|
| | | | | | Input Power kW | Frequency Hz | Nominal Current A Max. | | COS Φ | Ia / In | Cable Gland Metric |
| 1.47 | MVE 290/6N-HF-10A0 | 4.6 | 297 | 6,000 | 0.27 | 200 | 5 | 220-240V/400-460 | 0.75 | 2.00 | M20 |

| Model | Drawing | Size | DIMENSIONAL SPECIFICATIONS (mm) | | | | | | | | | | | | |
|--------------------|---------|------|---------------------------------|----|------------|--------------|-----|-------|-----|-----|----|----|----|-----|----|
| | | | C | M | A | B | ØG | Holes | D | E | F | H | I | L | N |
| MVE 290/6N-HF-10A0 | A | 10A0 | 211 | 45 | 62-74 / 33 | 106 / 83-105 | 9-7 | 4 | 130 | 135 | 11 | 50 | 96 | 107 | 85 |

| Model | Input Voltage | Input Frequency | Input Amperage |
|---------------|--------------------|-----------------|----------------|
| Converter 230 | 230V +10% -15% 1ph | 50/60Hz ± 5% | 5.5 A |
| Converter 115 | 115V +10% -15% 1ph | 50/60Hz ± 5% | 11.0 A |

FOOT MOUNTED ELECTRIC VIBRATORS WITH BUILT-IN CONVERTER

APPLICATION Concrete formworks

DESCRIPTION High frequency electric vibrator, foot mounted, with built-in converter, external application

FEATURES

DUTY CYCLE Continuous S1

MULTIVOLTAGE 1ph 230V - 1ph 115V (* voltage tolerance ± 10%)

INPUT FREQUENCY 50/60 Hz

WORKING TEMPERATURE -10 °C / +40 °C

MAX NOISE LEVEL 85 dB(A) at 1 meter distance

MATERIAL Cast aluminium

FINISHING Painted: orange RAL 2009

CERTIFICATIONS



II3D Ex tc IIIC Tx IP66
Equipment and protective system intended for use in potentially explosive atmospheres (Zone 22) - Directive 2014/34/UE
Compliance with Essential Health and Safety Requirements
EN 60079-0, EN 60079-31



Declaration of conformity "type B" according to: 2014/35/UE - 2006/42/EC - EN 60034-1



Conform to UL1446 and CSA 22.2 No 0-10

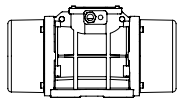
SUPPLY CABLE 10 m neoprene electric cable H07RN-F with SCHUKO 220V 2P+1T 16A plug

CONVERTER Sturdy cast aluminium box
Ergonomic and lightweight [3 Kg]

INVERTER Tropicalised and protected against vibration, moisture and shocks with a special resin

PROTECTION CLASS Vibrator protection IP66
Converter protection IP66
The inverter is protected against overload, overvoltage, excess temperature and short circuit.
A LED light shows the presence of a fault

ACCESSORIES Fixing brackets: CLW (Clamp for Wooden formworks); CLS (Clamp for Steel formworks)



CRADLE MOUNTED

External high frequency vibrators



MVE size 38



MVE size 50

Class II Div.2: Temp. Class **T4**
ExII 3D Temp. Class: 135 °C



| Wm kgcm | Model | Weight kg | Centrifugal Force kg | rpm | ELECTRICAL SPECIFICATIONS | | | | | |
|------------|---------------------|--------------|----------------------------|---------|---------------------------|-----------------|---------------------------|-----------|-------|--------------------------|
| | | | | | Input Power kW | Frequency Hz | Nominal Current A Max. | | COS φ | Cable Gland Metric |
| | | | | | | 42V | 230/400V | | | |
| 6.82 | MVE 1530/6N-HC-38A0 | 12 | 1,384 | 0-6,000 | 1.0 | 0-200 | 15 | 2.80/1.62 | 0.89 | M25 |
| 7.32 | MVE 1300/6N-HC-50A0 | 28 | 1,474 | 0-6,000 | 1.3 | 0-100 | 23 | 4.22/2.44 | 0.77 | M25 |
| 9.48 | MVE 2000/6N-HC-50A0 | 28 | 1,907 | 0-6,000 | 1.3 | 0-100 | 23 | 4.22/2.44 | 0.77 | M25 |
| 9.48 | MVE 2000/6N-HC-50A0 | 28 | 1,907 | 0-6,000 | 1.6 | 0-200 | 24 | 4.38/2.53 | 0.91 | M25 |
| 4.70 | MVE 2000/9N-HC-50A0 | 28 | 2,156 | 0-9,000 | 1.5 | 0-150 | 28 | 5.02/2.90 | 0.75 | M25 |

* MVE 1300/6N-HC-50A0 comes with eccentric weights set at 50%. Wm and centrifugal force refer to 6,000 rpm.

| Model | Drawing | Size | DIMENSIONAL SPECIFICATIONS (mm) | | | | | | | | | | | | |
|---------------------|---------|------|---------------------------------|----|-----|---|----|-------|-----|-----|-----|------|-----|-----|-----|
| | | | C | M | A | B | ØG | Holes | D | E | F | H | I | L | N |
| MVE 1530/6N-HC-38A0 | E | 38A0 | 276 | 43 | 68 | / | 22 | 1 | 190 | 172 | 198 | 94.5 | 174 | 190 | 156 |
| MVE 1300/6N-HC-50A0 | E | 50A0 | 321 | 62 | 136 | / | 25 | 1 | 240 | 184 | 218 | 102 | 185 | 86 | 169 |
| MVE 2000/6N-HC-50A0 | E | 50A0 | 321 | 62 | 136 | / | 25 | 1 | 240 | 184 | 218 | 102 | 185 | 86 | 169 |
| MVE 2000/6N-HC-50A0 | E | 50A0 | 321 | 62 | 136 | / | 25 | 1 | 240 | 184 | 218 | 102 | 185 | 86 | 169 |
| MVE 2000/9N-HC-50A0 | E | 50A0 | 321 | 62 | 136 | / | 25 | 1 | 240 | 184 | 218 | 102 | 185 | 86 | 169 |

CRADLE MOUNTED ELECTRIC VIBRATORS

APPLICATION Concrete formworks

DESCRIPTION High frequency electric vibrator, cradle mounted, external application

FEATURES

DUTY CYCLE Continuous S1

MULTIVOLTAGE 3ph 42V - 3ph 230/400V (voltage tolerance ± 10%)

FREQUENCY 0-100Hz - 0-150Hz - 0-200Hz

VARIABLE FREQUENCY 0÷100Hz

WORKING TEMPERATURE -10 °C / +40 °C

MAX NOISE LEVEL 85 dB(A) at 1 meter distance

MATERIAL Cast aluminium or iron

FINISHING Painted: orange RAL 2009

CERTIFICATIONS



II3D Ex tc IIIC Tx IP66
Equipment and protective system intended for use in potentially explosive atmospheres (Zone 22) -
Directive 2014/34/UE
Compliance with Essential Health and Safety Requirements
EN 60079-0, EN 60079-31



Declaration of conformity "type B" according to: 2014/35/UE - 2006/42/EC - EN 60034-1



Conform to UL1446 and CSA 22.2 No 0-10

OPTIONS Power cable and plug terminal box fulfill of resin

ACCESSORIES Fixing bracket: CRS (Cradle for Steel concrete moulds)



EXTERNAL PNEUMATIC VIBRATORS

The external pneumatic vibrators have **no electrical components**.

They are powered via **air compressor** that spins the rotors inside the vibrator at a very high speed (generally between 10,000 and 17,000 vpm). This generates a circular vibration that spreads in all directions.

The optimum frequency varies depending on the dimensions of the aggregates: a low frequency (approximately 10,000 vpm) favours the vibration of large granules (pebbles and gravel), while a high frequency (approximately 20,000 vpm) favours the vibration of fine granules (sand, cement and

others).

They are used especially in the construction of concrete segments for tunnels, viaducts and bridges.

The OLI pneumatic vibrators have a **solid and durable body** made of ductile cast iron.

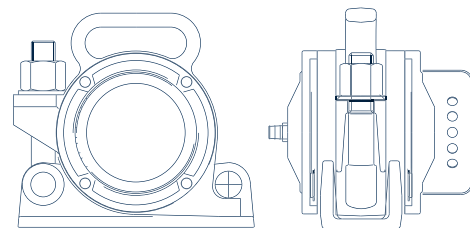
They are characterised by **high reliability and efficiency** as well as **compact size**.

Just like the electric vibrators, they may also be bolted or attached via quick-coupling clamps to formworks or moulds for the purpose of easy movement.

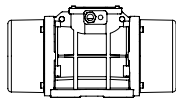


Benefits

- » Easy handle
- » No electric component
- » No maintenance



EFFICIENT AND RELIABLE



HFP

External high frequency pneumatic vibrators



| MODEL | Drawing | Working Pressure bar | Vibration vpm | Centr. Force kg | Air Consump. l/min | Noise Level dB (A) | DIMENSIONAL SPECIFICATIONS (mm) | | | | | | | | | |
|------------|---------|-------------------------|------------------|--------------------|-----------------------|-----------------------|---------------------------------|---------|---------|---------|---------|---------|---------|---------|----------|--------------|
| | | | | | | | A mm | B mm | C mm | D mm | E mm | F mm | G mm | H mm | IN mm | Weight mm |
| HFP 600P | G | 6 | 17,000 | 720 | 1,000 | 100 | 111 | 220 | 180 | 20 | 164 | 20 | - | 60 | 15 | 6.3 |
| HFP 1000P | | 6 | 16,500 | 1,122 | 1,100 | 100 | 111 | 220 | 180 | 20 | 164 | 20 | - | 60 | 15 | 7.2 |
| HFP 1400P | | 6 | 16,000 | 1,453 | 1,200 | 1,200 | 100 | 111 | 220 | 180 | 20 | 164 | 20 | - | 60 | 15 |
| HFP 600C | H | 6 | 17,000 | 720 | 1,000 | 100 | 120 | 180 | - | - | 164 | - | 18 | 94 | 15 | 6.3 |
| HFP 1000C | | 6 | 16,500 | 1,122 | 1,100 | 100 | 120 | 180 | - | - | 164 | - | 18 | 94 | 15 | 7.2 |
| HFP 1400C | | 6 | 16,000 | 1,453 | 1,200 | 1,200 | 100 | 120 | 180 | - | - | 164 | - | 18 | 94 | 15 |
| HFP 2700C | I | 6 | 16,000 | 2,753 | 1,600 | 103 | 224 | 235 | - | - | 160 | - | 24 | 84 | 15 | 14.0 |
| HFP 4000C | | 6 | 15,200 | 4,079 | 1,800 | 103 | 224 | 235 | - | - | 160 | - | 24 | 84 | 15 | 14.5 |
| HFP 4500C | | 6 | 8,500 | 4,587 | 1,800 | 103 | 224 | 238 | - | - | 160 | - | 24 | 84 | 15 | 17.6 |
| HFP 6000C | | 6 | 14,500 | 6,118 | 1,800 | 103 | 224 | 235 | - | - | 160 | - | 24 | 84 | 15 | 16.3 |
| HFP 4001C* | | J | 6 | 10,200 | 4,079 | 1,800 | 90 | 215 | 235 | - | - | 180 | - | 24 | 84 | 15 |

* Silent model; measured at 1 mt distance

HFP - PNEUMATIC VIBRATORS

APPLICATION Concrete formworks on site
Concrete moulds in precast industry

FEATURES

WORKING PRESSURE 6 bar

AIR SUPPLY QUALITY Class 5.4.4


WORKING TEMPERATURE -10 °C / +60 °C

MAX NOISE LEVEL 103 dB(A)
Silent version HFC 4001C: 90 dB(A) at 1 meter distance

TECHNOLOGY Eccentric rotor

MATERIALS Steel and cast iron

FINISHING Painted yellow RAL 1007

CERTIFICATIONS  Community Directive ATEX 2014/34/EU
Conformity verified according to the standard documents: EN 12100-1, ISO 14121

ACCESSORIES Fastening systems:
CLW (Clamp for Wooden formworks);
CLS (Clamp for Steel formworks);
CRS (Cradle for Steel concrete moulds).

HFP model G on CLW



HFP model I on CRS





FASTENING SYSTEMS FOR EXTERNAL VIBRATORS

CLW

CLAMP FOR WOODEN FORMWORKS

| | |
|-------------|---|
| APPLICATION | Quick mounting of vibrators on wooden formworks |
| SAFETY BELT | Included |
| FINISHING | Galvanized |

SUITABLE FOR (most common)

| | |
|-----------|-------------------------|
| DOKA | H20, Top50, FF20 |
| PERI | VT20K, GT24, VARIO GT24 |
| MEVA | H20 |
| PASCHAL | H20 |
| NOE | H20 |
| HÜNNEBECK | H20, R24, GF24, ES24 |



DIMENSIONAL SPECIFICATIONS

| Model | Length | Width | Height | Weight | Multiple Footprint (mm) | | | |
|---------|--------|-------|--------|--------|-------------------------|---------|-----------|-----|
| | mm | mm | mm | kg | Electric | | Pneumatic | |
| CLW 001 | 389 | 291 | 122 | 6.0 | 65x106 | 135x115 | 90x125 | 180 |

CLS

CLAMP FOR STEEL FORMWORKS

| | |
|--------------|--|
| APPLICATION | Quick mounting of vibrators on steel formworks |
| SAFETY CABLE | Included |
| FINISHING | Galvanized |

SUITABLE FOR (most common)

| | |
|------|--------------------------------|
| DOKA | Framax XLife, Alu Framax XLife |
| PERI | Trio |
| MEVA | StarTec, Mammut |
| NOE | NOEtop |



DIMENSIONAL SPECIFICATIONS

| Model | Length | Width | Height | Weight | Multiple Footprint (mm) | | | |
|---------|--------|-------|--------|--------|-------------------------|---------|-----------|-----|
| | mm | mm | mm | kg | Electric | | Pneumatic | |
| CLS 001 | 389 | 291 | 122 | 6.5 | 68x106 | 135x115 | 90x125 | 180 |

CRS

CRADLE FOR STEEL CONCRETE MOULDS

| | |
|-------------|--|
| APPLICATION | Quick mounting of vibrators on steel concrete moulds |
|-------------|--|

SUITABLE FOR

STEEL CONCRETE MOULDS

All OLI fastening systems are designed to be used with electric and pneumatic vibrators



DIMENSIONAL SPECIFICATIONS

| Model | Length | Width | Height | Weight | Radius |
|---------|--------|-------|--------|--------|--------|
| | mm | mm | mm | kg | mm |
| CRS 055 | 180 | 105 | 140 | 3.5 | 55 |
| CRS 080 | 230 | 85 | 184 | 5.0 | 80 |



MSP-4 MULTIPLE SOCKETS PANEL

For simultaneously connection of formwork's vibrators

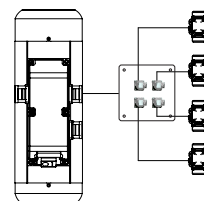


MSP-4 - CONNECTED TO THE OLI CONVERTER CMT35

Suitable to power up to 4 electric vibrators MVE 290/6

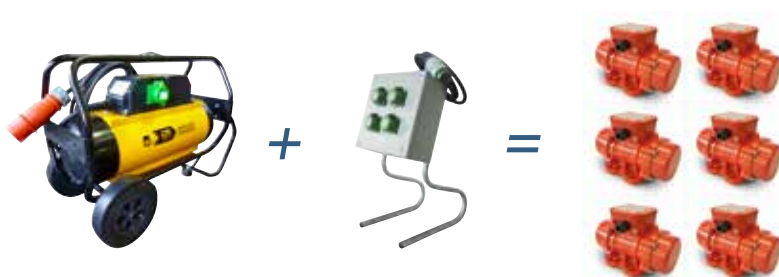


MOUNTING SCHEME

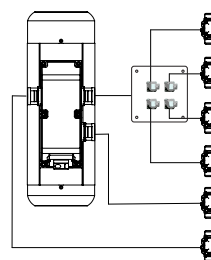


MSP-4 - CONNECTED TO THE OLI CONVERTER CMT55

Suitable to power up to 6 electric vibrators MVE 290/6

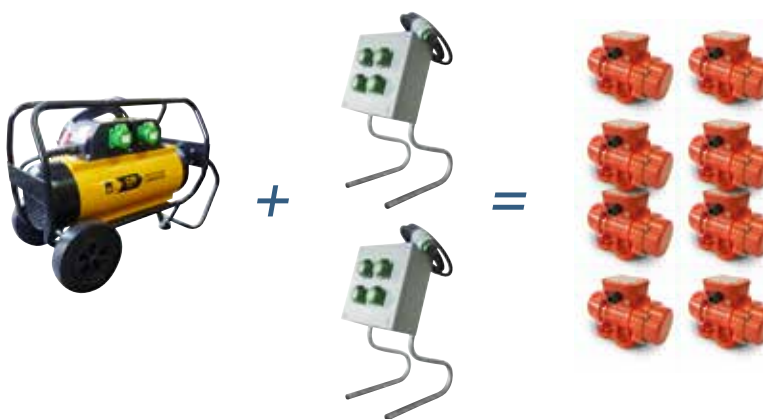


MOUNTING SCHEME

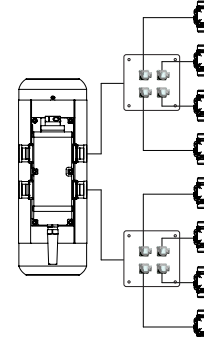


MSP-4 - CONNECTED TO THE OLI CONVERTER CMT85

Suitable to power up to 8 electric vibrators MVE 290/6



MOUNTING SCHEME



IMPORTANT

Never connect more vibrators than what suggested in the mounting schemes, even if there are unused output sockets.

SWITCH BOX

For a better functioning of the vibrator it is advisable to use the special push-button panel (to use the switch box), which can be purchased separately.





SYSTEM DESIGN CONSULTANCY

Choosing OLI for the construction of concrete consolidation plants means being able to count on a dedicated technical office, with a long and extensive specific experience.

From the very first stages of design, OLI supports the customer by providing indications on how to fix and position the vibrators to obtain the best results in terms of duration and aesthetics of the finished product.

OLI is able to supply custom-designed systems (both electrical and pneumatic), which guarantee maximum operational efficiency.

Stages of realization of a plant

1. Customer request analysis
2. Project development
3. Sizing

Supply of electrical system
Supply of pneumatic system



Benefits

- » A single interface for consulting and product supply
- » Improved management and operational efficiency

**TURNKEY
PROJECT**



ELECTRIC SYSTEM

Supply of complete system

Each construction site or precast plant have their own specificities and needs. After a detailed analysis of the production process, OLI supports the customer providing tailor-made solutions that optimize the productivity of the site.

Systems offered by OLI:

- Mobile control panel with various output voltage and frequency, from 2 to 10 output
- Fix control panel with distribution boxes for a better cables distribution
- Fix control panel with remote control
- Fix control panel with PLC and software specifically designed for the application

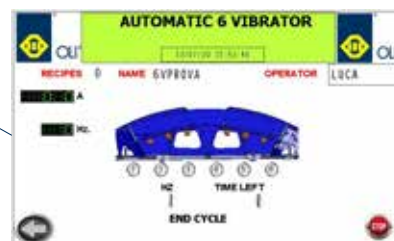
In addition, OLI designs and supplies fully automated solutions for precast plant, complying with the "Industry 4.0" legislation.



MOBILE
Control Panel



FIX
Control Panel + software



PNEUMATIC SYSTEM

Supply of complete system

OLI is able to study and supply air distribution systems (except the compressor) that guarantee the optimal air flow rate necessary to maximize the efficiency, both for construction sites and for precast plants that use pneumatic vibrators.

Few examples of the possible solutions offered by OLI:

- Main distribution line
- Flexible pipes for connecting the vibrators
- Ball valves and fittings
- Fully automated Electro-pneumatic control panels with solenoid valves and PLC with dedicated control software specifically designed for the application.



Solenoid valve



Main distribution line with
ball valves and fittings



Tips and recommendations for use

TIPS FOR CHOOSING THE INTERNAL VIBRATOR

Selection of the vibrating head length

It must never exceed the thickness of the concrete layer.

Selection of the needle diameter

Factors to be taken into consideration:

- composition of the concrete
- quantity of reinforcements (percentage of reinforcement inside the concrete element)
- size of the spaces between the various reinforcements (mesh sizes)
- thickness of the concrete layer

The diameter to be used must allow the maneuver of the vibrator inside the reinforcement, without getting stuck in the mesh.

Definition of the operating tube length

It must be longer than the depth of the manufactured article in order to allow the vibration of the deeper layers.

TIPS FOR CHOOSING THE EXTERNAL VIBRATOR

Pneumatic or electric?

The choice depends on the type of power available (electricity or compressed air).

What type of fastening?

It depends on the construction material and on the shape of the profiles to which the vibrators have to be fastened.

Definition of the positioning

It depends on the size and the shape of the formwork or mold.*

Definition of the operating cycle

The number of vibrators to run simultaneously depends on the size of the formwork or mold and on the pour rate of the plant.

It is important to run the vibrators only when the concrete is inside the formwork or mold in order to avoid resonance or vibration out of control.*

Definition of the power supply

Standard frequency electric vibrators (3000RPM) can be connected DOL (Direct On Line).

High frequency electric vibrators (6000RPM) is recommended to connect to control panels according to the input voltage and frequency of the chosen vibrators.

Pneumatic vibrators for concrete consolidation must be connected to air supply as indicated in the catalogue.

* For the right positioning and operating cycle please refer to OLI Technical support.

MAIN RECOMMENDATIONS FOR USE

Repeated vibration

It means vibrating the already compacted concrete again. This technique is used to mix successive layers of concrete in order to improve the surface finish quality of columns and walls and to increase their strength and wear resistance.

Vibration inside the formwork

Make sure that the vibrating head does not touch the interior walls because, besides damaging them, it could generate depressions in the manufactured article, thus deteriorating the quality of the surfaces.

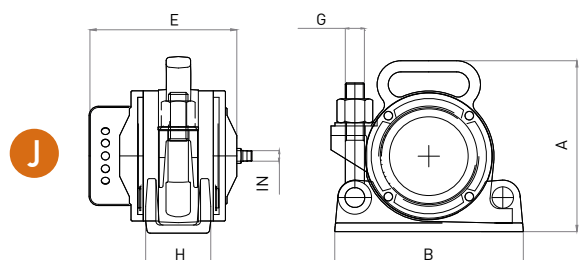
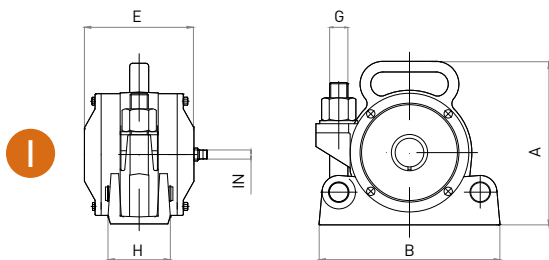
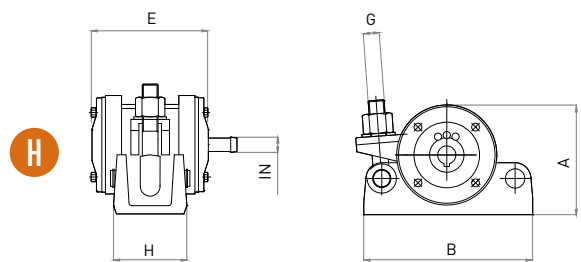
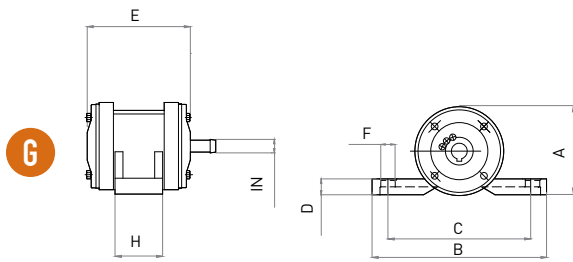
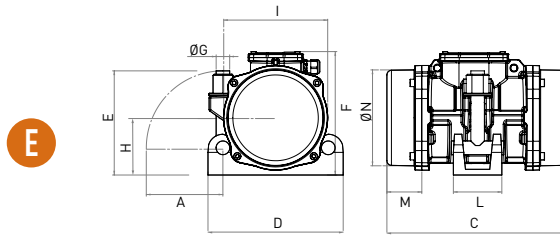
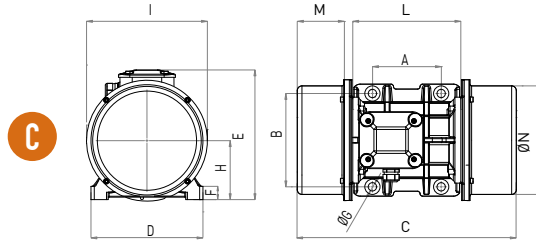
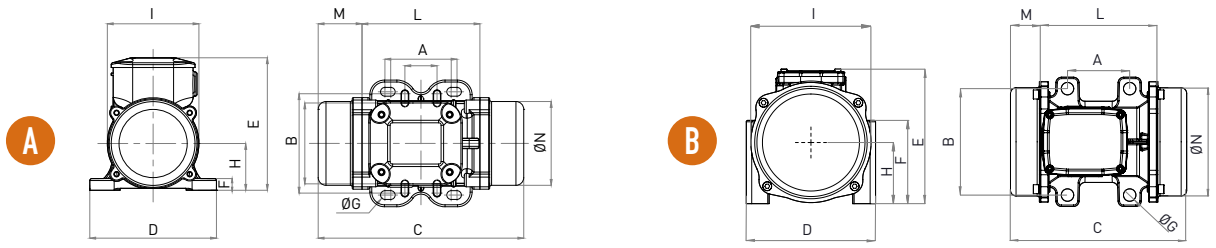
Vibrators with rubber tips may be used to reduce this problem.

Insufficient vibration

It is the most common problem. Insufficient vibration can alter the structural properties, causing problems such as: lower resistance, higher abrasion, higher permeability, and consequently shorter duration and poor surface quality.

Excessive vibration

The use of oversized equipment generates the segregation of the aggregates, in addition to the damage incurred to the formwork and moulds.



WHEN YOU NEED IT, WHERE YOU NEED IT.


THE WORLDWIDE LEADER IN VIBRATION TECHNOLOGY

www.olivibra.com



OLI Headquarters

Via Canalazzo, 35
41036 Medolla (MO) - Italy

 +39 0535 41 06 11

 info@olivibra.com

OLI worldwide

OLI Australia

OLI Benelux

OLI Brazil

OLI China

OLI France

OLI Germany

OLI India

OLI Italy

OLI Malaysia

OLI Malta

OLI Middle East

OLI Nordic

OLI Poland

OLI Russia

OLI South Africa

OLI Spain

OLI Thailand

OLI Turkey

OLI UK

OLI USA

